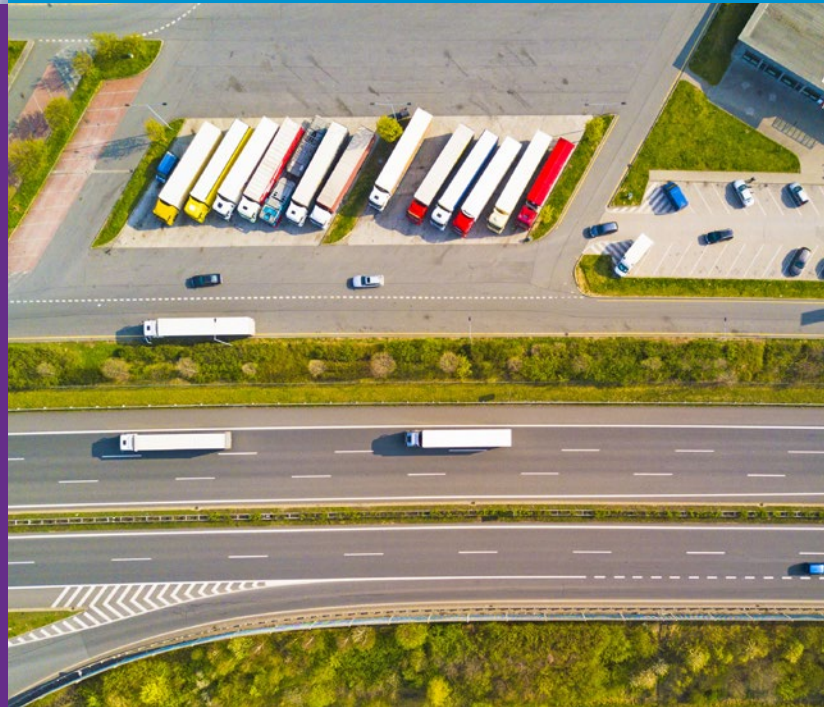
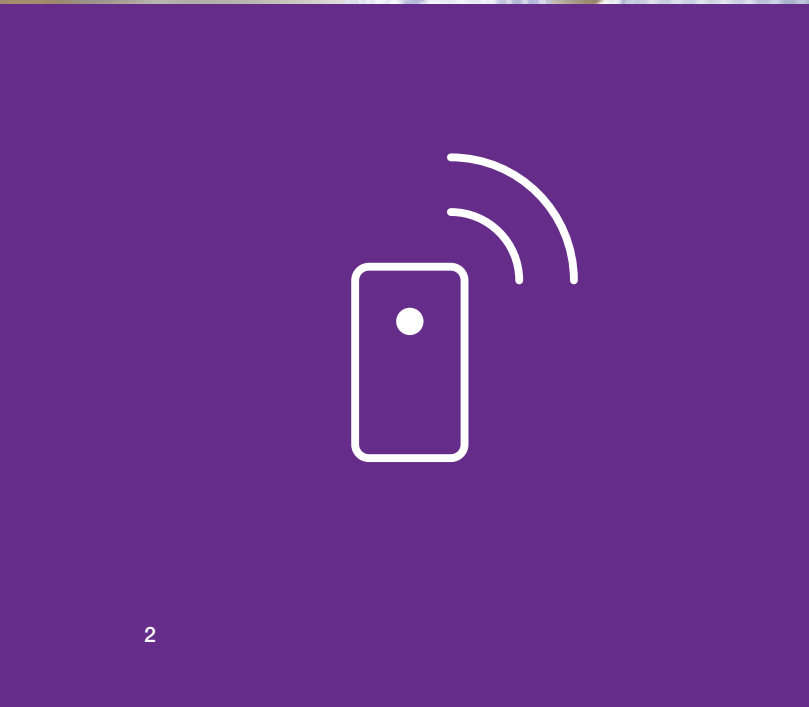
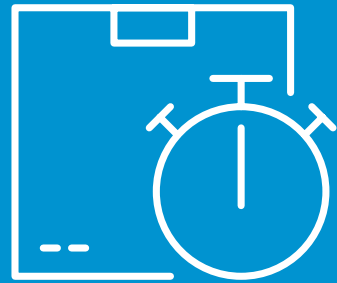


# What Are Late Deliveries Costing Me?

**Use Sensor-based Tracking to Help Minimize Costly Fees and Shipment Disruptions**



A Carrier Company



# In-the-Moment Intelligence Across the Globe

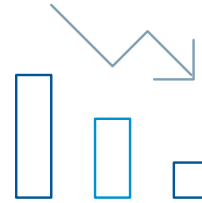
Cargo delays or supply chain disruptions can have costly ramifications for manufacturers or logistics providers, whether they are on inbound or outbound shipments. This is especially true for time-sensitive shipments when early or late deliveries result in penalties, expensive delays or missed customer expectations. Sensor-based real-time cargo tracking can help eliminate these issues with in-the-moment factual visibility into the status of your cargo while it's in transit.

Global real-time intelligence on the exact location and anticipated departure or delivery of your cargo will provide you with key data that can help you avoid costly risks and fines. Without this level of insight, supply chain inefficiencies can have major impacts that show up as unwanted fines, penalties or charge backs. They also could ultimately result in lost business, production delays, dissatisfied customers and damaged brand reputation.

## When what you have isn't working well...

Many cargo tracking systems and technologies can leave companies and logistics providers in a bind, as they deliver limited visibility from a mix of carrier and third-party logistics (3PL) feeds. Asset-based tracking technologies and scanning tools—such as hard-wired telematics and electronic-logging devices—track trucks, trailers and containers rather than the cargo itself. While the data from these systems can be useful, it's the exact location of the cargo itself at any given moment, not the transport unit, that is most important.

Without this knowledge, there is added complexity—especially when there is a scheduled appointment or a tight delivery window.



## What are Late Deliveries Costing Me?

### POTENTIAL CONSEQUENCES OF COSTLY SUPPLY CHAIN INEFFICIENCIES

- Lost revenue
- Missed delivery fines or penalties
- Poor customer service
- Lack of supply chain control
- Inability to measure logistics partners performance
- Material shortages
- Interruption to post-delivery processes
- Increased labor expenses for idle personnel
- Brand reputation

# Rely on Real-time Intelligence to Avoid Costly Risks

With continuous cargo monitoring via real-time sensor technology from Sensitech, costly and unnecessary risks associated with shipments delays can be better managed and potentially avoided.

We provide a global, easy-to-use service that supplies you with the ability to track a shipment at the cargo level in real time—every step of the way, from origin to final destination. You can have visibility into your supply chain and current transit data whenever you need it, with continuous real-time alerts on delays or at-risk shipments.

With Sensitech sensor-based tracking technology, you can improve on-time performance, reduce costs and proactively communicate more effectively with customers and partners. Sensitech technology and services allow you to:

- Get real-time visibility for every link in the supply chain for greater control.
- Monitor shipments in real time while in transit to avoid costly penalties.
- Proactively manage delays and schedule changes to optimize logistics operations.
- Address supply chain interruptions to improve on-time delivery, avoid costly fees and drive continuous supply chain optimization.
- Improve overall logistics performance with greater speed and efficiency for superior customer service on every shipment.

## Deploy Quickly and Easily

Sensitech sensors are applied at distribution centers, contract manufacturing sites and 3PL locations—much like a label would be applied during the packing or staging process. The tracking device travels with your cargo through its entire journey, with no disruption at the shipping or receiving dock. The sensors require no capital expense, ongoing maintenance or configuration; they can be disposed of or recycled after use. You simply order pre-configured sensors for your shipments in the same way you order shipping labels and boxes.

We ship as many sensors as you need, and all you do is push an activation button and place them with your cargo. The battery-operated devices start working immediately via global cellular networks to provide immediate data on your cargo.

## Get Automated Alerts for Fast Decision Making

When your cargo is in transit, you'll receive customer-specified real-time alerts for exceptions and reporting on demand, with visibility across each carrier or mode of transport—all without the need for any integration with other systems. You can automatically get notifications of key status indicators, such as late departures, late arrivals and pre-alerts for behind-schedule shipments.

## Manage Cargo Delivery Costs Every Step of the Way



This level of visibility allows you to make intelligent decisions in the moment—not after the fact—so you can address supply chain disruptions and take action before they have a costly impact. For example, if you have highly trained personnel waiting for a critical shipment that has been delayed, they can be reassigned or rescheduled so as not to incur costly labor charges for idle staff. And if you're a logistics provider, you can alert your customer of any delays to reduce or eliminate late fees and improve customer satisfaction and retention.



## Track Your Cargo on Real-Time Maps

In addition to real-time alerts, manufacturers, logistics providers, and customers can also access the cargo's location at any time via a Sensitech's secure, web-based tracking and monitoring platform. You can view shipment locations on an interactive map to identify where your cargo is at any given moment. You can zoom in and out on the map, or filter by a variety of fields (such as product, origin, destination or alarm status) to narrow down the shipments you are interested in tracking. There is no software to upload and manage, making it easy for you to know where your cargo is at all times.

## Maximize the Power of Your Data

To provide a comprehensive view of your shipping data, we can also integrate Sensitech sensor data with your transportation management, enterprise resource planning or other logistics systems via application programming interface (or API-level) integrations. This gives you a holistic view of the timely and accurate information you need to effectively manage the shipment segment of your supply chain.

## Find the Weak Spots in Your Supply Chain

You can't correct problems that you are unaware of, and this is especially true with complex shipments that use multiple logistics partners and transport modes. Shipping delays, interruptions and performance issues can be costly and root causes can be hard to pinpoint without the right data and tools.

Using Sensitech sensor data, our logistics reporting and analytics tools help you identify the causes of shipment issues so disruptions can be minimized. As you accumulate a wealth of shipment data over time, post-shipment analysis provides an accurate and factual way to measure logistics performance, address specific problems and drive improvements.

For instance, with reports measuring on-time performance, you have insightful data to analyze specific performance for carriers, origins, routes and destinations. This helps to isolate singular or reoccurring problem areas and provides a negotiation tool for improvement with carriers and other logistics partners.

## Make Avoiding Fines and Penalties Easier

**WITH SENSITECH'S SENSOR-BASED SOLUTIONS, YOUR TRACKING PROGRAM IS UP AND RUNNING IN A MATTER OF DAYS, NOT MONTHS OR YEARS.**

The sensors are easy to use, and can be deployed without any operational complexity, complicated integration or the need to buy and maintain complex equipment. Moreover, with real-time in-transit data available at any time, you'll no longer wonder about your cargo's whereabouts.

# Know Where Your Cargo Is

In today's world, knowing the status of your cargo is critical. And with Sensitech's proven logistics expertise, global reach and advanced real-time sensor technology, we can help you tackle your on-time cargo delivery challenges. Our services and products provide the real-time visibility you need to manage shipments in transit and drive operational improvements.

Contact us to find out how we can help you eliminate the complexity of in-transit cargo tracking through real-time visibility for every step in your supply chain.

## CORPORATE HQ

+1 800-843-8367  
+1 978-927-7033  
[sensitech.clientservices@carrier.com](mailto:sensitech.clientservices@carrier.com)

## EMEA REGIONAL HQ

+31 (0) 252 211 108  
[sensitech.clientservicesEMEA@carrier.com](mailto:sensitech.clientservicesEMEA@carrier.com)



# About Sensitech

Sensitech Inc. is a global leader in delivering supply chain visibility solutions. Our innovative monitoring products and services help to maintain the quality, integrity and security of our customers' valuable products at every step in their journey, all around the world. For over 30 years, leading companies in the food, pharmaceutical, industrial, consumer goods and other industries have relied on Sensitech to help protect their products—and their bottom lines.



[sensitech.com](https://sensitech.com)



A Carrier Company

Sensitech Inc. • Global Headquarters • 800 Cummings Center • Suite 258X • Beverly, MA 01915-6197  
1-800-843-8367 • +1-978-927-7033 • Fax: +1-978-921-2112 • [clientservices@sensitech.com](mailto:clientservices@sensitech.com)

©2021 Carrier. All Rights Reserved.